

Recycling Liquid Chromatography Workshop

Pre-conference workshop of the 41st Annual Conference of the MSBMB

Monday and Tuesday
August 15 & 16, 2016
9:00am - 5:00pm

Taylor's University Lakeside Campus
No. 1, Jalan Taylor's, 47500 Subang Jaya, Selangor

Registration fees: Student RM100, Non-student RM150
(10% Discount for MSBMB members)

Speakers: Ms Tan Poi Teng, Ms Tam Yit Then

Ms Tan Poi Teng

- » She worked as Assistant Lab Manager in a Pharmaceutical Manufacturer in Malaysia for 3 consecutive years.
- » She has more than 9 years of experience in laboratory and analytical instruments.
- » Specialize in pharmaceutical application, HPLC analysis and analytical sample preparation.
- » She is currently the Senior Application Chemist for Lab Science Solution.

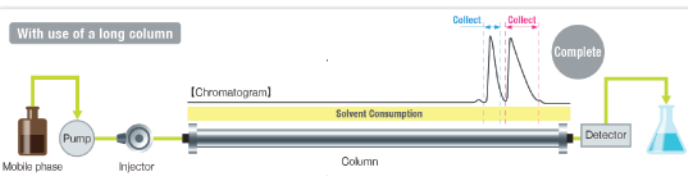
Ms Tam Yit Then

- » Yit Then graduated from UKM with Bachelor of Biochemistry (Hons, First Class).
- » She has more than 7 years of experience in laboratory and application support specialize in HPLC column and sample preparation products.
- » She is currently the Application Chemist for Lab Science Solution.

High Resolution Preparative HPLC

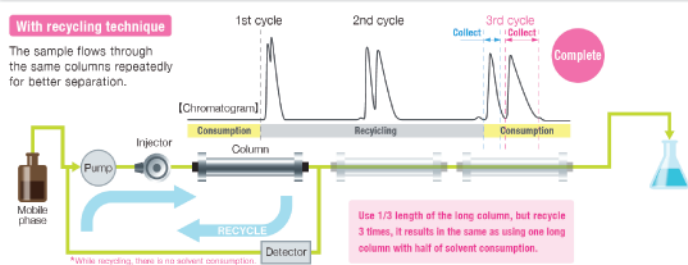
Isolate and purify your compounds with latest technology! Fast & Efficient!!!

Fully automated system 10mL/min, 30mL/min, 200mL/min, 500mL/min and 800mL/min maximum flow rate.



[Disadvantages]

- 1 Leads to expenses of purchasing longer columns.
- 2 Rises solvent consumption.
- 3 Causes high column pressure. = It is not realistic.



[Advantages]

- 1 Reduces expenses of purchasing columns.
- 2 Stops consuming solvent - high cost performance and good for environmental.
- 3 Achieves the same separation as if using a longer column.

Register ▶▶

Please contact:

- 1) Dr Anthony Ho **Tel:** 03-5629 5440
Email: Anthony.Ho@taylors.edu.my
- 2) Ms Erica Cheah **Tel:** 03-5124 8299
Email: erica@labsciencesolution.com

Day 1 - 15 August 2016 (Monday)

- 9.00am to 9.30am: Registration
9.30am to 9.35am: Welcome and Introduction
9.35am to 10.30am: Theory on Fundamentals and Concept of Recycling LC (part 1)
10.30am to 10.45am: Morning Tea Break
10.45am to 11.30am: Theory on Fundamentals and Concept of Recycling LC (part 2)
11.30am to 1.00pm: Applications Samples
1.00pm to 2.00pm: Lunch
2.00pm to 3.30pm: Instruments Introduction in Lab (part 1)
3.30pm to 3.45pm: Afternoon Tea Break
3.45pm to 4.45pm: Instruments Introduction in Lab (part 2)
4.45pm to 5.00pm: Q & A

Day 2 - 16 August 2016 (Tuesday)

- 9.30am to 10.30am: Hands on session in Lab - including parameter, setup injection, data acquisition, fractionation
10.30am to 10.45am: Morning Tea Break
10.45am to 12.30pm: Hands on "cout"
12.30pm to 2.00pm: Lunch
2.00pm to 3.45pm: Fractionation/ Isolation/ Reinjection of Fractions to show that the specific peak is collected
3.45pm to 4.00pm: Afternoon Tea Break
4.00pm to 4.30pm: Trouble shooting including basic maintenance of column and system
4.30pm to 5.00pm: Wrap up and discussion & closing

Workshop Registration Form

Name: _____
Membership No.: _____
(for MSBMB members)
Mobile No.: _____
Email: _____

SEATS ARE LIMITED to 20 pax only!!
FIRST COME FIRST SERVE!

Organized by:



TAYLOR'S UNIVERSITY
Wisdom · Integrity · Excellence

IT'S IN YOU TO **OWN THE FUTURE**

